



 **BIZ CORPORATES**

FEEL THE DIFFERENCE

Front cover  
**40410**  
Melon Solanda Plain Long  
Sleeve Shirt  
**60315**  
Grey Cropped Jacket  
**10320**  
Grey Contour Band Pant  
**99200**  
Leather Reversible Belt

Back cover  
**40120**  
Dynasty Green Fifth Avenue  
Long Sleeve Shirt  
**80313**  
Grey Slimline Jacket  
**70313**  
Grey Slimline Pant  
**99102**  
Dynasty Green Single Contrast  
Stripe Tie

At Biz Corporates we know that your team will look and feel their best when they have a wardrobe of inspired clothing options to choose from each day.

It's our aim to make dressing for work as easy as possible with a range of well considered and design focused corporate wear.

This year, the introduction of the *Boulevard* shirting collection brings colour on board. Designed to co-ordinate across the entire Biz Corporates range, mix and match with scarves, ties and belts to create an unbeatable working wardrobe.

Try on the Biz Corporates range today and *feel the difference!*

*Boulevard Shirting* ..... 02

*Boulevard Accessories* ..... 18

*Co-ordinates* ..... 26

*Rococo* ..... 40

*Comfort Wool Stretch* ..... 48

*Cool Stretch Plain* ..... 66

*Cool Stretch Pinstripe* ..... 90



# Shirt Tales

Although shirts are considered a wardrobe staple, the new Boulevard range is anything but basic, with a colour and range story to impress.

It's all about the cut, from the crisp, clean lines of Fifth Avenue, the tailored shape of Bordeaux, through to the more relaxed fabric and print of Solanda, Boulevard ensures a fit for every taste.

**40111**  
Dynasty Green  
Fifth Avenue  
3/4 Sleeve Shirt  
**14012**  
Charcoal  
Hipster Fit Pant







*Top left*  
**40111**  
 Alaskan Blue  
 Fifth Avenue  
 3/4 Sleeve Shirt

*Bottom left*  
**40110**  
 Patriot Blue  
 Fifth Avenue  
 Long Sleeve Shirt

*Right*  
**40110**  
 Melon Fifth Avenue  
 Long Sleeve Shirt  
**14012**  
 Navy Hipster Fit Pant  
**99200**  
 Leather Reversible Belt

*Fifth Avenue*







*Top left*

**40120**  
Alaskan Blue  
Fifth Avenue  
Long Sleeve Shirt  
**99100**  
Alaskan Blue Spot Tie

*Bottom left*

**40120**  
Dynasty Green  
Fifth Avenue  
Long Sleeve Shirt

*Right*

**40120**  
Patriot Blue  
Fifth Avenue  
Long Sleeve Shirt  
**74012**  
Black Flat Front Pant  
**99300**  
Leather Reversible Belt  
**99102**  
Patriot Blue Single  
Contrast Stripe Tie





## Bordeaux



*Left*  
**40114**  
Melon Bordeaux  
3/4 Sleeve Shirt  
**20214**  
Black Chevron Band Skirt

*Right*  
**40112**  
Alaskan Blue Bordeaux  
Short Sleeve Shirt  
**10212**  
Black Hipster Fit Pant





Hudson



*Left*  
**40311**  
Dynasty Green Hudson  
3/4 Sleeve Shirt  
**10118**  
Navy Louise Pant

*Top right*  
**40310**  
Melon Hudson  
Long Sleeve Shirt

*Bottom right*  
**40311**  
Patriot Blue Hudson  
3/4 Sleeve Shirt  
(folded cuff)







*Top left*  
**40320**  
 Patriot Blue Hudson  
 Long Sleeve Shirt

*Bottom left*  
**40322**  
 Patriot Blue Hudson  
 Short Sleeve Shirt  
**74012**  
 Charcoal Flat Front Pant  
**99300**  
 Leather Reversible Belt

*Right*  
**40320**  
 Melon Hudson  
 Long Sleeve Shirt  
**74012**  
 Charcoal Flat Front Pant  
**99300**  
 Leather Reversible Belt





Vermont



*Left*  
**40210**  
Melon Vermont  
Long Sleeve Shirt  
**14012**  
Black Hipster Fit Pant  
**99200**  
Leather Reversible Belt

*Right*  
**40220**  
Patriot Blue Vermont  
Long Sleeve Shirt  
**74011**  
Black One Pleat Pant  
**99300**  
Leather Reversible Belt





*Top left*  
**40410**  
 Alaskan Blue Solanda  
 Plain Long Sleeve Shirt  
**24011**  
 Charcoal  
 Relaxed Fit Skirt

*Bottom left*  
**40510**  
 Patriot Blue Solanda  
 Print Long Sleeve Shirt

*Right*  
**40510**  
 Dynasty Green Solanda  
 Print Long Sleeve Shirt  
**14012**  
 Charcoal Hipster Fit Pant  
**99200**  
 Leather Reversible Belt

*Solanda*





**30211**  
Navy Sleeveless Dress  
**99200**  
Leather Reversible Belt



## *Womens Belts*

Buckle up and pull any look together with this essential accessory.

The belt is back with an ingenious new twist. An adjustable leather belt with reversible buckle allows you to wear your belt two ways, red or black to suit your style.





# *Womens Scarves*

Scarves are an ideal transeasonal addition to any wardrobe.

Whatever the weather, the Biz Corporates range of crimped acrylic scarves will brighten the day with a pop of vibrant colour to complete the look.

**40410**

White Solanda  
Plain Long Sleeve Shirt

**99000**

Alaskan Blue Monotone  
Woven Scarf





**40220**  
Alaskan Blue Vermont  
Long Sleeve Shirt  
**74012**  
Navy Flat Front Pant  
**99300**  
Leather Reversible Belt



# *Mens Belts*

More neccessary than accessory,  
Biz Corporates mens belts are better than ever.

Get double the wear with this new leather adjustable and reversible belt. The pivoting buckle is a practical new addition allowing you to wear your belt two ways, brown or black.





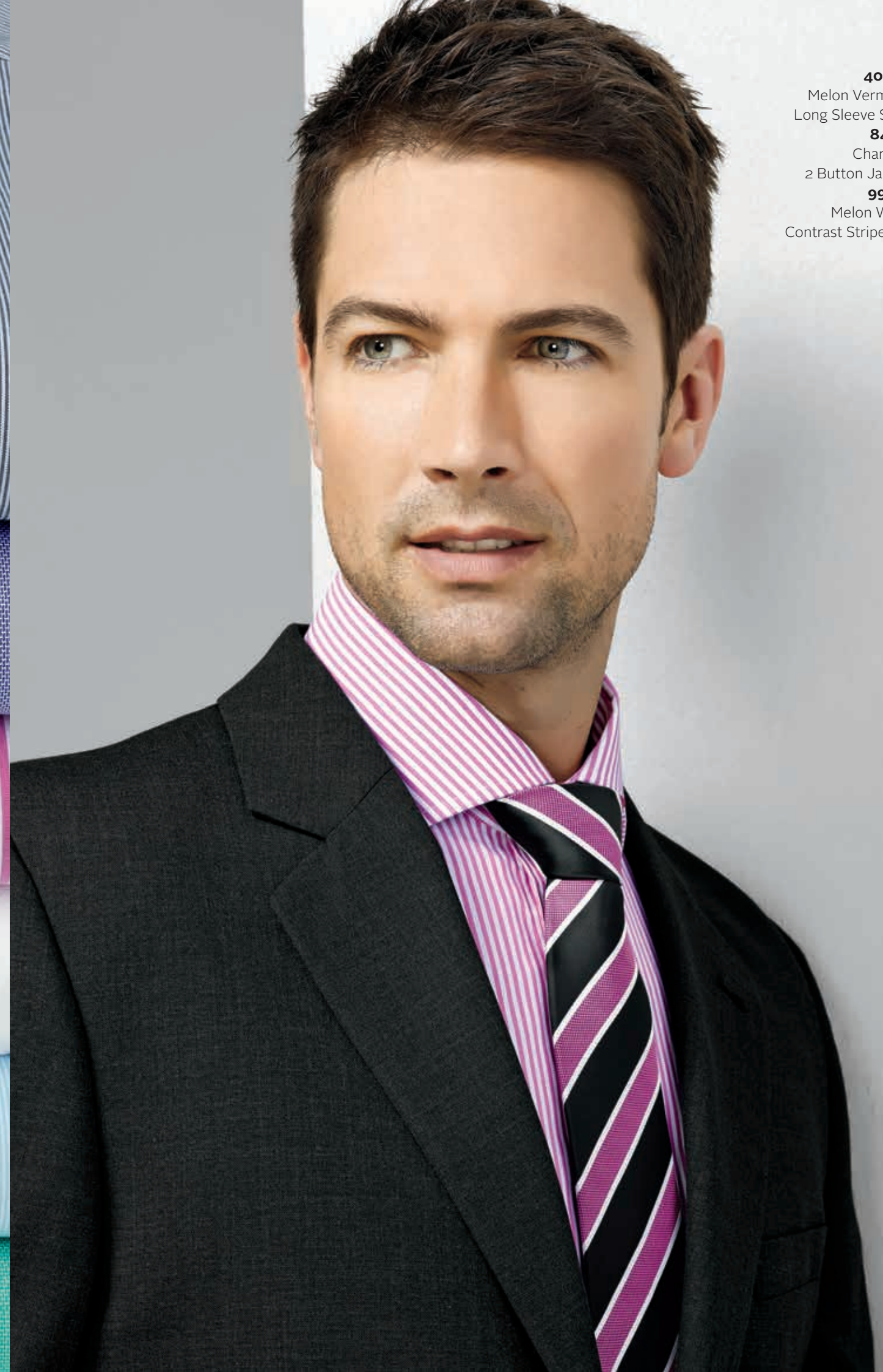


# Mens Ties

A new take on ties,  
the suiting essential.

A tie is the fail-safe way to complete your look,  
adding cohesion to suit and shirt with a touch of  
complementary colour, texture and tone.

**40220**  
Melon Vermont  
Long Sleeve Shirt  
**84011**  
Charcoal  
2 Button Jacket  
**99103**  
Melon Wide  
Contrast Stripe Tie







**40310**  
White Hudson  
Long Sleeve Shirt  
**60211**  
Black Short-Mid  
Length Jacket  
**20214**  
Black Chevron Skirt  
**99000**  
Melon Monotone  
Woven Scarf

# A *Co-ordinated Approach*

Look sharp. An inspiring overview  
of the Biz Corporates range of suits,  
shirts and accessories.

Designed to create options with ease, every colour, cut  
and style can be seamlessly co-ordinated, making the  
ultimate working wardrobe.



Rococo Grey  
& Melon

Sophistication in soft tone, the  
contemporary way to wear colour.



1

2

1

**40410**  
Melon Solanda Plain Long Sleeve Shirt  
**20316**  
Grey Feature Pleat Skirt  
**99200**  
Leather Reversible Belt

2

**40120**  
Melon Fifth Avenue Long Sleeve Shirt  
**70313**  
Grey Slimline Pant  
**99300**  
Leather Reversible Belt

3

**40210**  
Melon Vermont Long Sleeve Shirt  
**60315**  
Grey Cropped Jacket  
**10311**  
Grey Relaxed Fit Pant  
**99200**  
Leather Reversible Belt

4

**40220**  
Melon Vermont Long Sleeve Shirt  
**80313**  
Grey Slimline Jacket  
**70313**  
Grey Slimline Pant  
**99102**  
Melon Single Contrast Stripe Tie

5

**30312**  
Grey Shift Dress  
**99000**  
Melon Monotone Woven Scarf

4

5





1



## Cool Stretch Charcoal & Patriot Blue

Be bold in blue, the original boardroom staple.



2



3



4



5

1

**40210**

Patriot Blue Vermont Long Sleeve Shirt

**60111**

Charcoal Short-Mid Length Jacket

**20114**

Charcoal Chevron Skirt

2

**40120**

Patriot Blue Fifth Avenue Long Sleeve Shirt

**70114**

Charcoal Adjustable Waist Pant

**99102**

Patriot Blue Single Contrast Stripe Tie

**99300**

Leather Reversible Belt

3

**40510**

Patriot Blue Solanda Print Long Sleeve Shirt

**10117**

Charcoal Slim Leg Pant

**99200**

Leather Reversible Belt

4

**40220**

Patriot Blue Vermont Long Sleeve Shirt

**80113**

Charcoal Slimline Jacket

**70113**

Charcoal Slimline Pant

**99100**

Patriot Blue Spot Tie

5

**40311**

Patriot Blue Hudson 3/4 Sleeve Shirt

**60114**

Charcoal Sleeveless Jacket





## Cool Stretch Black & Dynasty Green

Go green with a striking mix of style and confidence.



**1**  
**40320**  
Dynasty Green Hudson Long Sleeve Shirt  
**90112**  
Black Longline Vest  
**70112**  
Black Flat Front Pant

**2**  
**40111**  
Dynasty Green Fifth Avenue 3/4 Sleeve Shirt  
**20116**  
Black Waisted Pencil Skirt

**3**  
**40310**  
Dynasty Green Hudson Long Sleeve Shirt  
**60113**  
Black Jacket with Reverse Lapel  
**10116**  
Black Piped Band Pant

**4**  
**40220**  
Dynasty Green Vermont Long Sleeve Shirt  
**80111**  
Black 2 Button Jacket  
**70111**  
Black One Pleat Pant  
**99103**  
Dynasty Green Wide Contrast Stripe Tie

**5**  
**40210**  
Dynasty Green Vermont Long Sleeve Shirt  
**99000**  
Dynasty Green Monotone Woven Scarf







- 1  
**40410**  
 White Solanda Plain Long Sleeve Shirt  
**60213**  
 Black Jacket with Reverse Lapel  
**10212**  
 Black Hipster Fit Pant
- 2  
**40320**  
 White Hudson Long Sleeve Shirt  
**80211**  
 Black 2 Button Jacket  
**70211**  
 Black One Pleat Pant  
**99101**  
 Grey Self Stripe Tie
- 3  
**30211**  
 Black Sleeveless Side Zip Dress  
**99200**  
 Leather Reversible Belt
- 4  
**40310**  
 White Hudson Long Sleeve Shirt  
**10212**  
 Black Hipster Fit Pant  
**99200**  
 Leather Reversible Belt

# *Cool Stretch Pinstripe Black & White*

Absolutely elegant, this is the return of pinstripe suiting.







1



3



5



2



## Wool Stretch Charcoal & Alaskan Blue

Cool tones remain a career-wear classic.



4

- 1  
**40120**  
Alaskan Blue Fifth Avenue Long Sleeve Shirt  
**84011**  
Charcoal 2 Button Jacket  
**74011**  
Charcoal One Pleat Pant  
**99101**  
Alaskan Blue Self Stripe Tie  
**99300**  
Leather Reversible Belt

- 2  
**40114**  
Alaskan Blue Bordeaux 3/4 Sleeve Shirt  
**64014**  
Charcoal Sleeveless Jacket  
**14011**  
Charcoal Relaxed Fit Pant  
**99200**  
Leather Reversible Belt

- 3  
**40110**  
Alaskan Blue Fifth Avenue Long Sleeve Shirt  
**24013**  
Charcoal Fluted Skirt

- 4  
**34012**  
Charcoal Shift Dress  
**99200**  
Leather Reversible Belt

- 5  
**40220**  
Alaskan Blue Vermont Long Sleeve Shirt  
**94011**  
Charcoal Peaked Vest with Knitted Back  
**99102**  
Alaskan Blue Single Contrast Stripe Tie





## Wool Stretch Navy & Melon

Blue meets bright. An unexpected but highly effective match.



1

**40220**

Melon Vermont Long Sleeve Shirt

**84011**

Navy 2 Button Jacket

**74011**

Navy One Pleat Pant

2

**40510**

Melon Solanda Print Long Sleeve Shirt

**64013**

Navy Jacket with Reverse Lapel

**24015**

Navy Multi Pleat Skirt

3

**40120**

Melon Fifth Avenue Long Sleeve Shirt

**94012**

Navy Longline Vest

**74012**

Navy Flat Front Pant

**99100**

Melon Spot Tie

4

**40210**

Melon Vermont Long Sleeve Shirt

**14017**

Navy Slim Leg Pant



# Grey Matters

Breaking away from the traditional corporate palette of navy and black, Rococo offers a range of well crafted styles to suit those with a discerning eye for fashion.

Rococo's textured grey base is the perfect partner to the Boulevard shirting range. The cross dyed stretch fabric is durable and easy care, for effortless style.

*A smart combination of fashion focused design and wear-ability.*

**30312**  
Grey Shift Dress





*Left*

**40110**  
Melon Fifth Avenue  
Long Sleeve Shirt  
**60315**  
Grey Cropped Jacket  
**10320**  
Grey Contour Band Pant  
**99200**  
Leather Reversible Belt

*Right*

**40210**  
Patriot Blue Vermont  
Long Sleeve Shirt  
**10311**  
Grey Relaxed Fit Pant  
**99200**  
Leather Reversible Belt







Left  
**40114**  
 Dynasty Green Bordeaux  
 3/4 Sleeve Shirt  
**20316**  
 Grey Feature Pleat Skirt

Right  
**40310**  
 Patriot Blue Hudson  
 Long Sleeve Shirt  
**60315**  
 Grey Cropped Jacket  
**20316**  
 Grey Feature Pleat Skirt







*Left*

**40320**

White Hudson  
Long Sleeve Shirt

**80313**

Grey Slimline Jacket

**70313**

Grey Slimline Pant

*Right*

**40120**

Patriot Blue Fifth Avenue  
Long Sleeve Shirt

**80313**

Grey Slimline Jacket

**70313**

Grey Slimline Pant

**99102**

Patriot Blue Single  
Contrast Stripe Tie





**40210**

Alaskan Blue Vermont  
Long Sleeve Shirt

**64013**

Charcoal Jacket with  
Reverse Lapel

**14017**

Charcoal Slim Leg Pant

**99200**

Leather Reversible Belt

# *Natural Selection*

Wool Stretch is the natural choice for  
comfortably stylish suiting.

With a mix of 43% Wool, 55% Polyester and 2% Elastane,  
the Wool Stretch range is easy care, providing year round  
comfort in any climate.



*Left*

**40410**

White Solanda Plain Long Sleeve Shirt

**64014**

Black Sleeveless Jacket

**14016**

Black Piped Band Pant

*Right*

**40310**

Patriot Blue Hudson Long Sleeve Shirt

**14012**

Black Hipster Fit Pant

**99200**

Leather Reversible Belt

*Far right*

**40114**

Patriot Blue Bordeaux  
3/4 Sleeve Shirt

**14011**

Black Relaxed Fit Pant

**99200**

Leather

Reversible

Belt





*Left*

**40210**

Dynasty Green Vermont  
Long Sleeve Shirt

**14015**

Navy Adjustable Waist Pant

*Right*

**40114**

Dynasty Green Bordeaux  
3/4 Sleeve Shirt

**24016**

Navy Waisted Pencil Skirt



*Adjustable Waist*







**40311**  
White Hudson  
3/4 Sleeve Shirt  
**24015**  
Charcoal Multi  
Pleat Skirt  
**99200**  
Leather  
Reversible Belt



**40112**  
Melon  
Bordeaux  
Short Sleeve  
Shirt  
**24014**  
Charcoal  
Chevron Skirt



**40510**  
Melon Solanda  
Print Long  
Sleeve Shirt  
**64011**  
Charcoal  
Short-Mid  
Length Jacket  
**24011**  
Charcoal  
Relaxed Fit Skirt



**40410**  
Melon Solanda Plain  
Long Sleeve Shirt  
**24013**  
Charcoal  
Fluted Skirt



*Left*

**34011**

Black Sleeveless Dress

**99200**

Leather Reversible Belt



*Right*

**34012**

Black Shift Dress

**99200**

Leather Reversible Belt







*Far left*  
**40110**  
 Patriot Blue Fifth Avenue  
 Long Sleeve Shirt  
**64011**  
 Charcoal Short-Mid  
 Length Jacket  
**14017**  
 Charcoal Slim Leg Pant

*Left*  
**40110**  
 Dynasty Green Fifth Avenue  
 Long Sleeve Shirt  
**64012**  
 Charcoal Longline Jacket  
**24015**  
 Charcoal Multi  
 Pleat Skirt

*Right*  
**40114**  
 Alaskan Blue  
 Bordeaux  
 3/4 Sleeve Shirt  
**64013**  
 Charcoal Jacket  
 with Reverse Lapel  
**14011**  
 Charcoal Relaxed  
 Fit Pant  
**99200**  
 Leather  
 Reversible Belt



*Left*

**40311**

White Hudson  
3/4 Sleeve Shirt

**54011**

Black Peaked Vest with  
Knitted Back

**14012**

Black Hipster Fit Pant

*Right*

**64014**

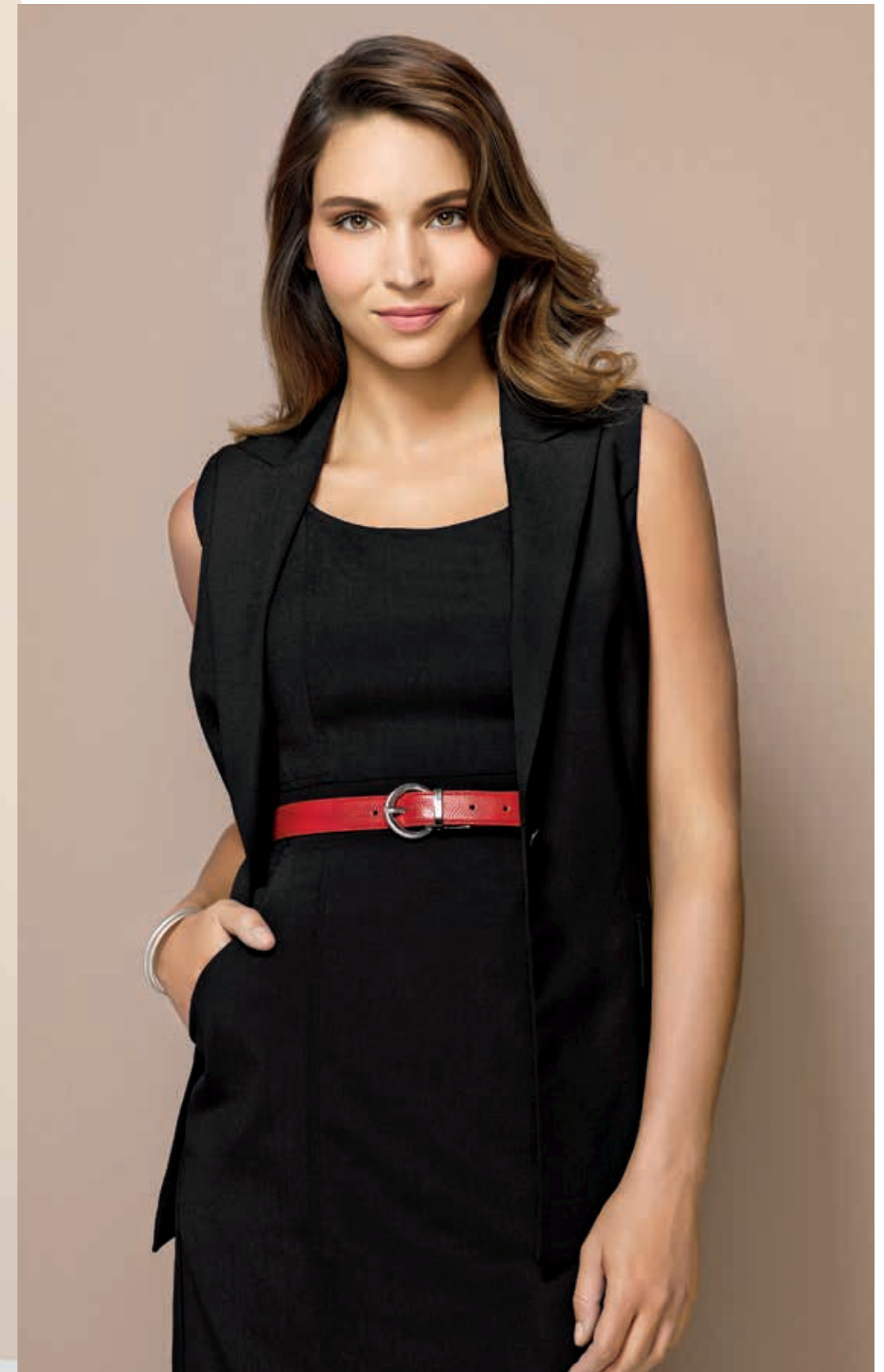
Black Sleeveless Jacket

**34011**

Black Sleeveless Dress

**99200**

Leather Reversible Belt







*Far left*  
**40120**  
 Dynasty Green Fifth Avenue  
 Long Sleeve Shirt  
**74011**  
 Navy One Pleat Pant  
**99300**  
 Leather Reversible Belt  
**99103**  
 Dynasty Green Wide  
 Contrast Stripe Tie

*Left*  
**40220**  
 Dynasty Green Vermont  
 Long Sleeve Shirt  
**74012**  
 Navy Flat Front Pant  
**99300**  
 Leather Reversible Belt

*Right*  
**40120**  
 Patriot Blue  
 Fifth Avenue  
 Long Sleeve Shirt  
**84011**  
 Navy 2 Button  
 Jacket  
**74011**  
 Navy One  
 Pleat Pant  
**99102**  
 Patriot  
 Blue Single  
 Contrast  
 Stripe Tie



*Left*  
**40220**  
Melon Vermont  
Long Sleeve Shirt  
**94012**  
Charcoal Longline Vest  
**74012**  
Charcoal Flat Front Pant

*Right*  
**40320**  
Melon Hudson  
Long Sleeve Shirt  
**94011**  
Charcoal Peaked Vest  
with Knitted Back  
**74011**  
Charcoal One  
Pleat Pant





# Corporate Cool

A Biz Corporates classic,  
Cool Stretch embodies practical  
detail, without scrimping on style.

Cool Stretch is at the forefront of design and fabric technology  
with a unique mix of polyester and bamboo charcoal. Add  
to this attention to details such as invisible adjustable waist  
bands, breathable easy care fabric with figure flattering lines  
and you have the best in business wear.



**40210**  
Dynasty Green Vermont  
Long Sleeve Shirt  
**60113**  
Black Jacket with  
Reverse Lapel  
**10111**  
Black Relaxed Fit Pant  
**99200**  
Leather Reversible Belt





*Left*  
**40310**  
 White Hudson  
 Long Sleeve Shirt  
**10112**  
 Black Hipster Fit Pant  
**99000**  
 Melon Monotone  
 Woven Scarf  
**99200**  
 Leather Reversible Belt

*Right*  
**40111**  
 Melon Fifth Avenue  
 3/4 Sleeve Shirt  
**60114**  
 Black Sleeveless Jacket  
**10117**  
 Black Slim Leg Pant







*Far left*  
**40410**  
 Patriot Blue Solanda  
 Plain Long Sleeve Shirt  
**10115**  
 Navy Adjustable Waist Pant

*Left*  
**40112**  
 Dynasty Green Bordeaux  
 Short Sleeve Shirt  
**10119**  
 Navy Adjustable  
 Waist Short

*Right*  
**40510**  
 Patriot Blue  
 Solanda Print  
 Long Sleeve Shirt  
**10118**  
 Navy Louise Pant







**40111**  
Dynasty Green  
Fifth Avenue  
3/4 Sleeve  
Shirt  
**10116**  
Charcoal Piped  
Band Pant



**40114**  
Melon  
Bordeaux 3/4  
Sleeve Shirt  
**10114**  
Charcoal  
Bootleg Pant



**40310**  
Dynasty Green  
Hudson Long  
Sleeve Shirt  
**10113**  
Charcoal Easy  
Fit Pant



*Elastic Waist*



**K317LT\***  
Black Trapeze  
Top  
**10100**  
Charcoal  
Maternity Pant

\* See Biz Collection for details



*Left*  
**40410**  
White Solanda  
Plain Long Sleeve Shirt  
**60111**  
Charcoal Short-Mid  
Length Jacket  
**20116**  
Charcoal Waisted  
Pencil Skirt

*Right*  
**40510**  
Alaskan Blue Solanda  
Print Long Sleeve Shirt  
**20115**  
Charcoal Multi  
Pleat Skirt  
**99200**  
Leather Reversible  
Belt





**40510**  
Alaskan Blue  
Solanda Print  
Long Sleeve Shirt  
**20112**  
Navy Bandless Skirt



**40311**  
White  
Hudson  
3/4 Sleeve  
Shirt  
**20113**  
Navy Fluted  
Skirt



**40410**  
Patriot Blue  
Solanda Plain  
Long Sleeve Shirt  
**60111**  
Navy Short-Mid  
Length Jacket  
**20111**  
Navy Relaxed  
Fit Skirt



**40111**  
Alaskan Blue  
Fifth Avenue  
3/4 Sleeve Shirt  
**20114**  
Navy Chevron Skirt







*Left*  
**30111**  
 Charcoal Sleeveless Dress

*Right*  
**30112**  
 Charcoal Shift Dress  
**99000**  
 Dynasty Green Monotone  
 Woven Scarf  
**99200**  
 Leather Reversible Belt







*Left*

**40110**

Dynasty Green Fifth Avenue  
Long Sleeve Shirt

**60113**

Black Jacket with  
Reverse Lapel

**10117**

Black Slim Leg Pant

**99200**

Leather Reversible Belt

*Top right*

**40310**

White Hudson  
Long Sleeve Shirt

**60111**

Black Short-Mid  
Length Jacket

**20114**

Black Chevron Skirt

*Bottom right*

**40310**

Dynasty Green Hudson  
Long Sleeve Shirt

**60112**

Black Longline Jacket

**10111**

Black Relaxed Fit Pant

**99200**

Leather Reversible Belt





*Left*

**40210**

Patriot Blue Vermont  
Long Sleeve Shirt

**60114**

Navy Sleeveless Jacket

**20115**

Navy Multi Pleat Skirt

*Right*

**40111**

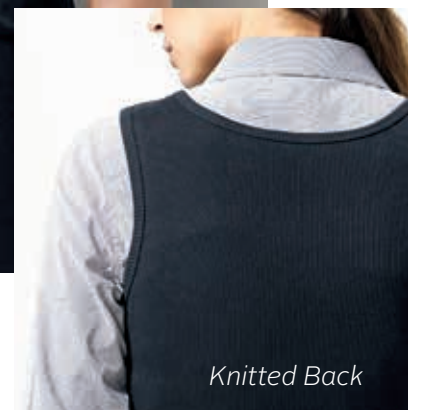
Patriot Blue Fifth Avenue  
3/4 Sleeve Shirt

**50111**

Navy Peaked Vest with  
Knitted Back

**10111**

Navy Relaxed Fit Pant



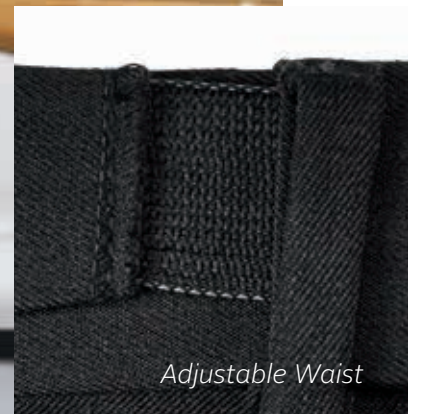
*Knitted Back*





*Left*  
**40322**  
 Dynasty Green  
 Hudson Short  
 Sleeve Shirt  
**70113**  
 Charcoal  
 Slimline Pant  
**99300**  
 Leather  
 Reversible Belt

*Right*  
**40320**  
 White Hudson  
 Long Sleeve Shirt  
**70114**  
 Charcoal  
 Adjustable  
 Waist Pant  
**99300**  
 Leather  
 Reversible Belt  
**99102**  
 Dynasty Green  
 Single Contrast  
 Stripe Tie



*Adjustable Waist*





*Far left*  
**40320**  
 Patriot Blue Hudson  
 Long Sleeve Shirt  
**70112**  
 Black Flat Front Pant  
**99300**  
 Leather Reversible Belt

*Left*  
**40320**  
 White Hudson  
 Long Sleeve Shirt  
**70111**  
 Black One Pleat Pant  
**99300**  
 Leather Reversible Belt  
**99100**  
 Melon Spot Tie

*Right*  
**40220**  
 Melon Vermont  
 Long Sleeve Shirt  
**80113**  
 Black Slimline Jacket  
**70113**  
 Black Slimline Pant





*Left*

**40120**

Alaskan Blue Fifth Avenue  
Long Sleeve Shirt

**80111**

Navy 2 Button Jacket

**70111**

Navy One Pleat Pant

**99300**

Leather Reversible Belt

*Top right*

**40120**

Patriot Blue Fifth Avenue  
Long Sleeve Shirt

**90112**

Navy Longline Vest

**70112**

Navy Flat Front Pant

**99100**

Patriot Blue Spot Tie

*Bottom right*

**40220**

Alaskan Blue Vermont  
Long Sleeve Shirt

**90111**

Navy Peaked Vest with  
Knitted Back

**70111**

Navy One Pleat Pant





**30211**  
Navy Sleeveless Dress

# *Straight Line Thinking*

The epitome of style and sophistication, pinstripe suiting is in line for an honourable mention.

With vertical lines to elongate form, and all the benefits of Cool Stretch fabric technology, Cool Stretch Pinstripe makes a bold statement. Wear it with confidence.





*Far left*  
**40111**  
 Dynasty Green  
 Fifth Avenue  
 3/4 Sleeve Shirt  
**10212**  
 Charcoal Hipster Fit Pant  
**99200**  
 Leather Reversible Belt

*Left*  
**40110**  
 Patriot Blue Fifth Avenue  
 Long Sleeve Shirt  
**10211**  
 Charcoal Relaxed Fit Pant  
**99200**  
 Leather Reversible Belt

*Right*  
**40410**  
 Dynasty Green Solanda  
 Plain Long Sleeve Shirt  
**20214**  
 Charcoal Chevron Skirt





*Left*

**40410**

Alaskan Blue Solanda  
Plain Long Sleeve Shirt

**60213**

Black Jacket with  
Reverse Lapel

**20211**

Black Relaxed Fit Skirt

*Right*

**40311**

Melon Hudson  
3/4 Sleeve Shirt

**20211**

Black Relaxed Fit Skirt

*Far right*

**40110**

Alaskan Blue Fifth Avenue  
Long Sleeve Shirt

**60211**

Black Short-Mid  
Length Jacket

**10211**

Black Relaxed Fit Pant

**99200**

Leather Reversible Belt







**40120**  
Patriot Blue Fifth  
Avenue Long  
Sleeve Shirt  
**80211**  
Black 2  
Button Jacket  
**70211**  
Black One  
Pleat Pant



**40320**  
White Hudson  
Long Sleeve Shirt  
**70212**  
Black Flat  
Front Pant  
**99103**  
Dynasty Green  
Wide Contrast  
Stripe Tie



**40320**  
Dynasty Green Hudson  
Long Sleeve Shirt  
**80211**  
Black 2 Button Jacket  
**70211**  
Black One Pleat Pant  
**99101**  
Grey Self Stripe Tie



# Retrofitting the Lady

Find the right fit for your body type with our measurement guide.

## How to Measure

For an accurate body measurement, please keep the tape measure taut.

### A. BUST

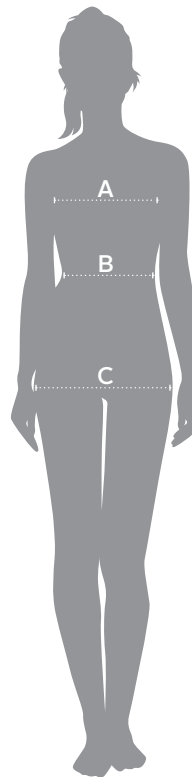
Measure under your arms and across shoulder blades, around the fullest part of your chest. Hold one finger between body and tape.

### B. WAIST

Measure around your natural waistline while holding one finger between body and tape.

### C. HIPS

Measure around fullest part of your hips (about 20 – 24 cm down from waist) while standing naturally.



### PANT & SKIRT LENGTHS

Pants and skirts will vary in length depending on the height of each individual and also their shape.

## Size Conversions

Please choose the size closest to your own body measurements.

### Standard Sizing

	4		6		8		10		12		14		16	
	cm	in	cm	in	cm	in	cm	in	cm	in	cm	in	cm	in
Bust	76.5	30	79	31	84	33	89	35	94	37	99	39	104	41
Waist	58.5	23	61	24	66	26	71	28	76	30	81	32	86	34
Lower	Add approximately 10 - 13 cm / in to waist measurement as this will vary.													
Hip	86.5	34	89	35	94	37	99	39	104	41	109	43	114	45

### Plus Sizing

	18		20		22		24		26		28		30	
	cm	in	cm	in	cm	in	cm	in	cm	in	cm	in	cm	in
Bust	111	44	116	46	121	48	126	50	131	52	136	54	141	56
Waist	93	37	98	39	103	41	108	43	113	45	118	47	123	49
Lower	Add approximately 10 - 13 cm / in to waist measurement as this will vary.													
Hip	121	48	126	50	131	52	136	54	141	56	146	57	151	60

Note - All measurements provided are approximate and for reference only. The size conversion chart is a guide only, actual sizing may vary according to the style and fit of the garment. The waist specifications are the natural waist measurements, which have to be considered even though the garments will fit lower.

## Style Fits

Our shirts and bottoms are available in fits to suit all body types.



### FITTED

Shaped and close fitting to the contours of the body.



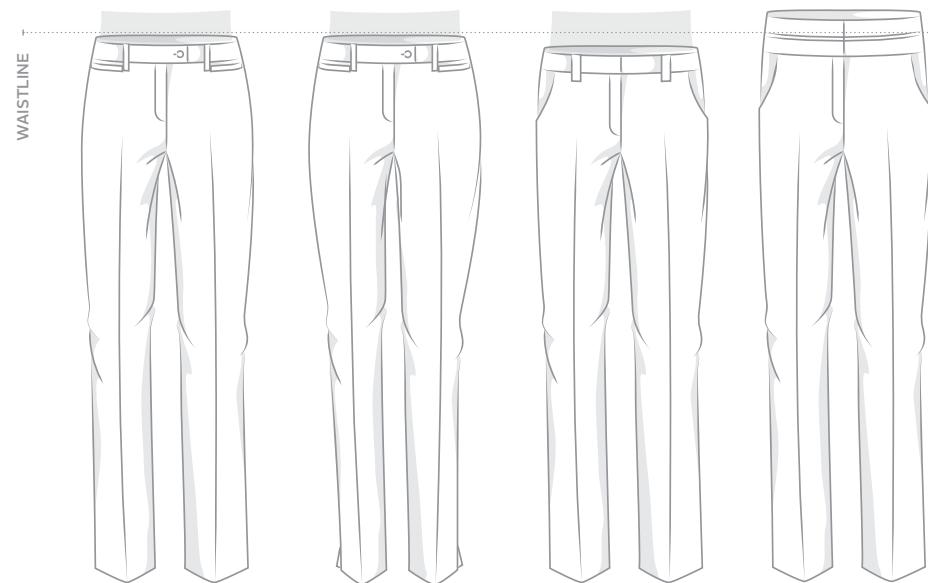
### SEMI-FITTED

Gently shaped through the torso. Follows the contours of the body.



### EASY FIT

Generous fit with a longer line. Straight through the torso.



### RELAXED FIT MID RISE

Sits slightly below waistline.

### SLIM LEG MID RISE

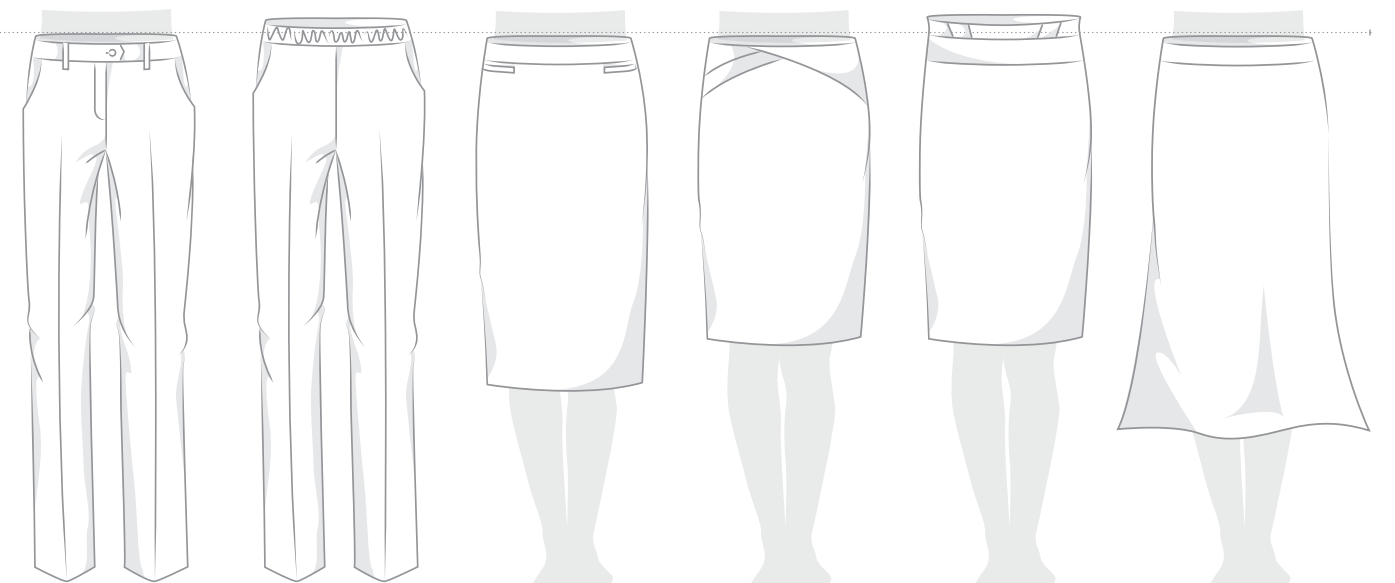
Sits slightly below waistline with contoured leg.

### HIPSTER FIT LOWER RISE

Lower rise, sits below waistline.

### HIGH WAISTED MID RISE

Wide waist band, sits over to waistline.



### ADJUSTABLE FIT MID RISE

Sits slightly below waistline, hidden elastic waist band.

### EASY FIT GENEROUS RISE

Elasticated waist band, sits closer to waistline.

### STRAIGHT BELOW KNEE

Sits slightly below waistline, finishes below knee.

### STRAIGHT ABOVE KNEE

Sits slightly below waistline, finishes above knee.

### HIGH WAISTED PENCIL

Wide waist band, sits over to waistline.

### FLUTED 3/4 LENGTH

Sits slightly below waistline, finishes between knee and calf.

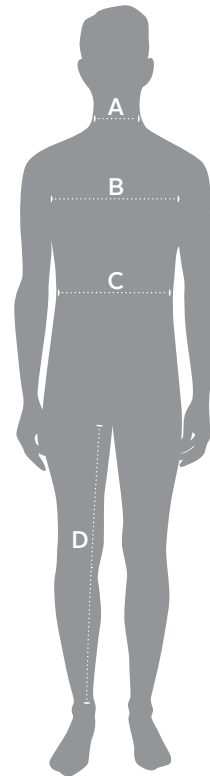


# Retrofitting the Man

Find the right fit for your body type with our measurement guide.

## How to Measure

For an accurate body measurement, please keep the tape measure taut.



### A. NECK

Measure around the middle of your neck at collar level, keeping the tape loose to make allowance for comfort.

### B. CHEST

Measure under your arms and across shoulder blades, around the fullest part of your chest. Hold one finger between body and tape.

### C. WAIST

Measure around your natural waistline while holding one finger between body and tape. Measure over shirt at position your pants would normally sit.

### D. IN SEAM

Measure from the crotch seam to the bottom of the inside leg of a well-fitting pair of pants.

## Style Fits

Our shirts and bottoms are available in fits to suit all body types.



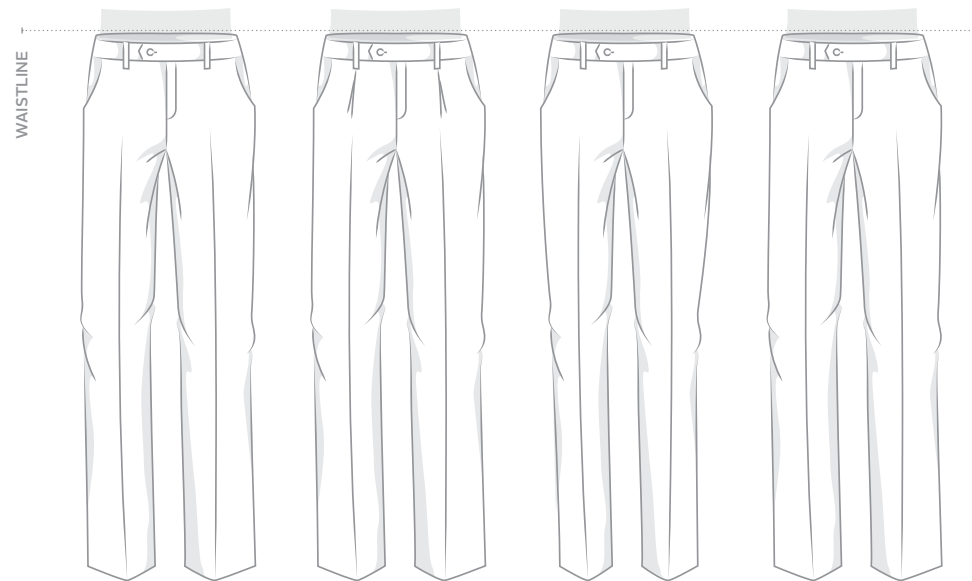
### EURO FIT

Slightly tapered through the torso, fitting to the contours of the body.



### EXECUTIVE FIT

Gently shaped through the torso. Relaxed modern fit.



### CONTEMPORARY FIT FLAT

Sits slightly below waistline with flat front.

### CONTEMPORARY FIT PLEAT

Sits slightly below waistline with single pleat front.

### CONTEMPORARY FIT SLIM LEG

Sits slightly below waistline, tapered through the leg.

### ADJUSTABLE FIT FLAT

Sits slightly below waistline, hidden elastic waist band.

## Size Conversions

Please choose the size closest to your own body measurements.

### Shirts

	XS	S	M	L	XL	2XL	3XL	4XL	5XL
Neck (cm)	35 - 36	37 - 38	39 - 40	41 - 42	43 - 44	45 - 46	47 - 48	49 - 50	51 - 52

### Jackets and Vests

	87R		92R		97R		102R		107R		112R	
	cm	in	cm	in	cm	in	cm	in	cm	in	cm	in
Chest	87	34	92	36	97	38	102	40	107	42	112	44
Waist	72	28	77	30	82	32	87	34	92	36	97	38
	117R		122R		127R		132R		137R		142R	
	cm	in	cm	in	cm	in	cm	in	cm	in	cm	in
Chest	117	46	122	48	127	50	132	52	137	54	142	56
Waist	102	40	107	42	112	44	117	46	122	48	127	50

### Trousers - Regular Fit

	77R		82R		87R		92R		97R		
	cm	in	cm	in	cm	in	cm	in	cm	in	
Waist	77	34	82	36	87	38	92	40	97	42	
In Seam	81	32	81	32	82	32	82	32	83	33	
	102R		107R		112R		117R		122R		
	cm	in	cm	in	cm	in	cm	in	cm	in	
Waist	102	40	107	42	112	44	117	46	122	48	
In Seam	83	33	84	33	84	33	84	33	84	33	

### Trousers - Stout Fit

	107S		112S		117S		122S		127S		
	cm	in	cm	in	cm	in	cm	in	cm	in	
Waist	107	42	112	44	117	46	122	48	127	50	
In Seam	81	32	81	32	82	32	82	32	83	33	

Note - All measurements provided are approximate and for reference only. The size conversion chart is a guide only, actual sizing may vary according to the style and fit of the garment. The waist specifications are the natural waist measurements, which have to be considered even though the garments will fit lower.



# Luxury Shirting

With Boulevard's refined fits, modern styling and impeccable attention to detail.

**Boulevard**  
BY BIZ CORPORATES



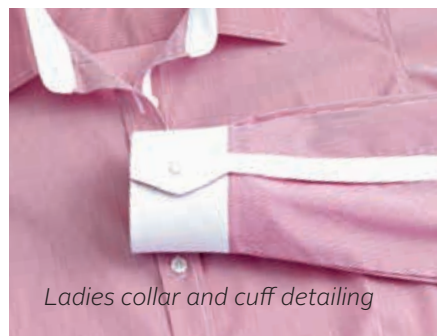
## Fifth Avenue

65% Cotton 33% Polyester 2% Elastane

**Ladies** semi-fitted yarn dyed fine stripe soft textured stretch cotton blend shirt.  
**Mens** euro-fit yarn dye fine stripe soft textured stretch cotton blend shirt.

### Care Instructions

Machine wash cold. Gentle cycle with like colours. Do not soak. Do not bleach. Tumble dry low. Cool iron. Do not dry clean.



Ladies collar and cuff detailing



Ladies 3/4 sleeve detailing



Mens collar and cuff detailing



## Vermont

60% Cotton 40% Polyester

**Ladies** semi-fitted open neck yarn dyed wide stripe soft textured stretch cotton blend shirt.  
**Mens** euro-fit yarn dyed wide stripe soft textured stretch cotton blend shirt.

### Care Instructions

Machine wash cold. Gentle cycle with like colours. Do not soak. Do not bleach. Tumble dry medium. Cool iron. Do not dry clean.dry. Warm iron. Do not dry clean.



Ladies collar and cuff detailing



Mens French cuff detailing



## Hudson

100% Cotton

**Ladies** semi-fitted open neck yarn dyed dobby shirt.  
**Mens** executive-fit dobby shirt.

### Care Instructions

Machine wash cold with like colours. Do not soak. Do not bleach. Do not tumble dry. Warm iron. Do not dry clean.



Ladies collar and cuff detailing



Ladies 3/4 sleeve detailing



Mens cuff detailing



## Bordeaux

65% Cotton 33% Polyester 2% Elastane

**Ladies** semi-fitted open neck yarn dyed fine stripe soft textured stretch cotton blend shirt.

### Care Instructions

Machine wash cold. Gentle cycle with like colours. Do not soak. Do not bleach. Tumble dry low. Cool iron. Do not dry clean.



## Solanda Plain

100% Polyester

**Ladies** semi-fitted open neck soft touch polyester shirt.

### Care Instructions

Machine wash warm. Gentle cycle with like colours. Do not soak. Do not bleach. Tumble dry medium. Cool iron. Do not dry clean.



## Solanda Print

100% Polyester

**Ladies** semi-fitted open neck soft touch polyester shirt.

### Care Instructions

Machine wash warm. Gentle cycle with like colours. Do not soak. Do not bleach. Tumble dry medium. Cool iron. Do not dry clean.



## Eye-Catching Extras

Complete the look with classic Boulevard essentials.



*Mens Spot Tie*  
100% Polyester

### Care Instructions

Dry clean only 30c ®.



*Mens Self Stripe Tie*  
100% Polyester

### Care Instructions

Dry clean only 30c ®.



*Ladies Leather Reversible Belt*  
100% Leather



*Mens Leather Reversible Belt*  
100% Leather



*Mens Single Contrast Stripe Tie*  
100% Polyester

### Care Instructions

Dry clean only 30c ®.



*Men Wide Contrast Stripe Tie*  
100% Polyester

### Care Instructions

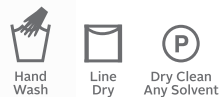
Dry clean only 30c ®.



*Ladies Monotone Woven Scarf*  
100% Viscose

### Care Instructions

Hand wash cold. Line dry in shade. Dry-cleanable 30c ®.



## Comfort Smart Fabrics

New fabric technology meets workplace demands.



*Rococo*

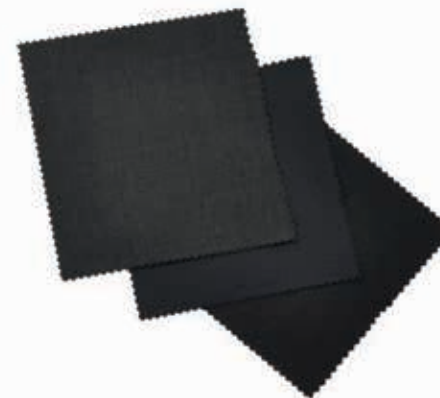
Cross Yarn Dye Suiting - Black & White  
72% Polyester 24% Viscose 4% Elastane

### Care Instructions

*Pants and Skirts* - Machine wash cold. Gentle cycle with like colours. Do not soak. Do not bleach. Do not tumble dry. Line dry in shade. Cool iron. Dry-cleanable.



*Jackets* - Dry clean only 30c ®.



*Comfort Wool Stretch*

55% Polyester 43% Wool 2% Elastane

### Care Instructions

*Pants and Skirts* - Machine wash on wool cycle or hand-wash using recommended wool detergent. Wash with similar colours. Rinse well. Do not bleach, soak, tumble dry. Line dry in shade. Warm iron (wool settings). Recommend dry clean 30c ®.



*Jackets and Vests* - Dry clean only 30c ®.



*Cool Stretch Plain*

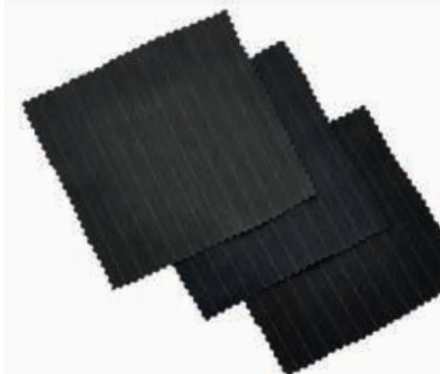
92% Polyester 8% Charcoal

### Care Instructions

*Pants and Skirts* - Warm or cold machine wash. Wash with similar colours. Do not bleach. Do not tumble dry. Line dry in shade. Warm iron. Recommend dry clean 30c ®.



*Jackets and Vests* - Dry clean only 30c ®.



*Cool Stretch Pinstripe*

92% Polyester 8% Charcoal

### Care Instructions

*Pants and Skirts* - Warm or cold machine wash. Wash with similar colours. Do not bleach. Do not tumble dry. Line dry in shade. Warm iron. Recommend dry clean 30c ®.



*Jackets and Vests* - Dry clean only 30c ®.

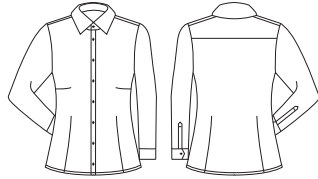
Note - When ironing, use a warm iron and recommended steam setting. Otherwise iron inside out or use a cover cloth. (A hot iron will shine the polyester yarn in the fabric). We recommend Qualified Professional Laundering for long term care of the Comfort Wool Stretch Suiting garments. Line Dry. DO NOT TUMBLE DRY your garment. We recommend drying in shade. Direct sunlight will accelerate fading of garment.



# Technical Information

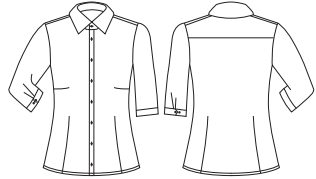
Style specifications for our Boulevard range of shirting and accessories.

## Ladies and Mens Fifth Avenue



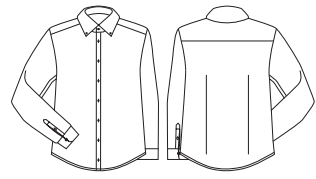
**Fifth Avenue Ladies Long Sleeve Shirt**

Style	40110
Sizes	4 – 26
Colours	Patriot Blue, Alaskan Blue, Dynasty Green, Melon
Pages	4, 5



**Fifth Avenue Ladies 3/4 Sleeve Shirt**

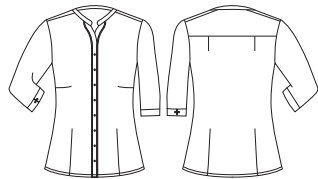
Style	40111
Sizes	4 – 26
Colours	Patriot Blue, Alaskan Blue, Dynasty Green, Melon
Pages	2, 4, 32



**Fifth Avenue Mens Long Sleeve Shirt**

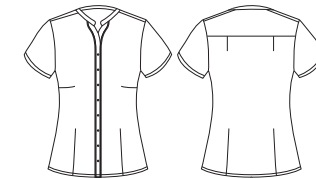
Style	40120
Sizes	XS - 5XL
Colours	Patriot Blue, Alaskan Blue, Dynasty Green, Melon
Pages	6, 7, 28, 30

## Ladies Bordeaux



**Bordeaux Ladies 3/4 Sleeve Shirt**

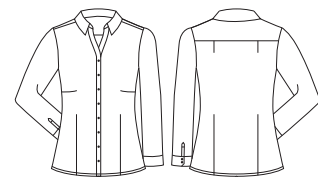
Style	40114
Sizes	4 – 26
Colours	Patriot Blue, Alaskan Blue, Dynasty Green, Melon
Pages	8



**Bordeaux Ladies Short Sleeve Shirt**

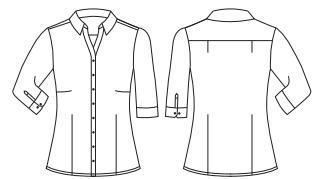
Style	40112
Sizes	4 – 26
Colours	Patriot Blue, Alaskan Blue, Dynasty Green, Melon
Pages	9

## Ladies and Mens Hudson



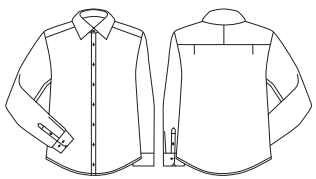
**Hudson Ladies Long Sleeve Shirt**

Style	40310
Sizes	4 – 26
Colours	Patriot Blue, White, Dynasty Green, Melon
Pages	11, 35



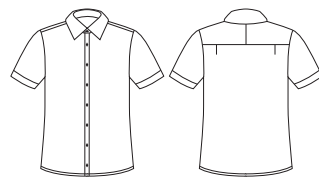
**Hudson Ladies 3/4 Sleeve Shirt**

Style	40311
Sizes	4 – 26
Colours	Patriot Blue, White, Dynasty Green, Melon
Pages	10, 11, 31, 32



**Hudson Mens Long Sleeve Shirt**

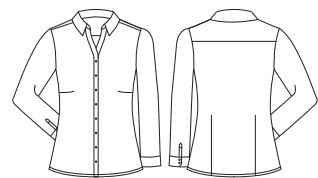
Style	40320
Sizes	XS - 5XL
Colours	Patriot Blue, White, Dynasty Green, Melon
Pages	12, 13, 32



**Hudson Mens Short Sleeve Shirt**

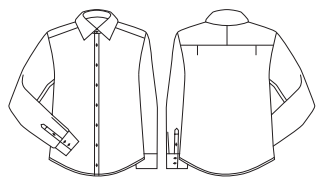
Style	40322
Sizes	XS - 5XL
Colours	Patriot Blue, White, Dynasty Green, Melon
Pages	12

## Ladies and Mens Vermont



**Vermont Ladies Long Sleeve Shirt**

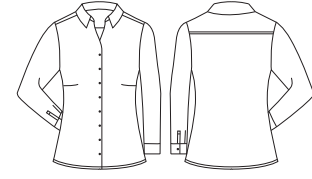
Style	40210
Sizes	4 – 26
Colours	Patriot Blue, Alaskan Blue, Dynasty Green, Melon
Pages	14, 30, 33



**Vermont Mens Long Sleeve Shirt**

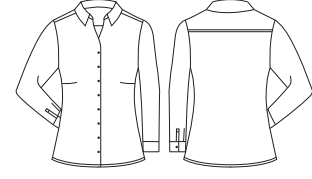
Style	40220
Sizes	XS - 5XL
Colours	Patriot Blue, Alaskan Blue, Dynasty Green, Melon
Pages	15, 22, 25, 31, 33

## Ladies Solanda



**Solanda Ladies Plain Long Sleeve Shirt**

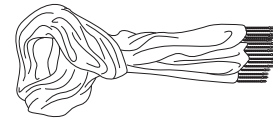
Style	40410
Sizes	4 – 26
Colours	Patriot Blue, Alaskan Blue, Dynasty Green, Melon, White
Pages	16, 21, 28, 34



**Solanda Ladies Print Long Sleeve Shirt**

Style	40510
Sizes	4 – 26
Colours	Patriot Blue, Alaskan Blue, Dynasty Green, Melon
Pages	16, 17, 30

## Ladies and Mens Accessories



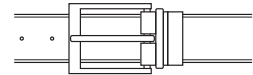
**Ladies Monotone Woven Scarf**

Style	99000
Sizes	One Size
Colours	Patriot Blue, Alaskan Blue, Dynasty Green, Melon
Pages	21, 26, 29, 33



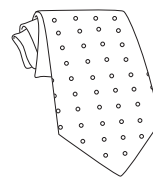
**Ladies Leather Reversible Belt**

Style	99200
Sizes	6-20, 22-28 - cut to size
Colours	Black/Red
Pages	5, 14, 17, 19, 30, 35



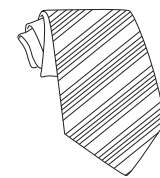
**Mens Leather Reversible Belt**

Style	99300
Sizes	72-97, 102-127 - cut to size
Colours	Black/Brown
Pages	13, 15, 22, 28



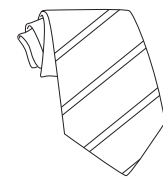
**Mens Spot Tie**

Style	99100
Sizes	One Size
Colours	Patriot Blue, Alaskan Blue, Dynasty Green, Melon
Pages	6



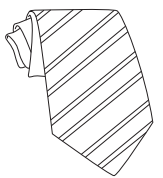
**Mens Self Stripe Tie**

Style	99101
Sizes	One Size
Colours	Patriot Blue, Alaskan Blue, Dynasty Green, Melon, Grey
Pages	31, 34



**Mens Single Contrast Stripe Tie**

Style	99102
Sizes	One Size
Colours	Patriot Blue, Alaskan Blue, Dynasty Green, Melon
Pages	7, 29, 30



**Mens Wide Contrast Stripe Tie**

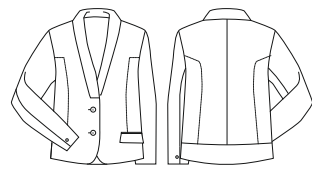
Style	99103
Sizes	One Size
Colours	Patriot Blue, Alaskan Blue, Dynasty Green, Melon
Pages	25, 33



# Technical Information

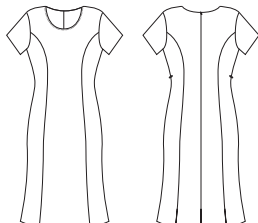
Style specifications for our range of suiting.

## Ladies and Mens Rococo



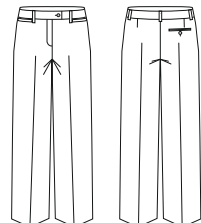
Ladies Cropped Jacket

Style	60315
Sizes	4 – 26
Colours	Grey
Pages	28, 42, 45



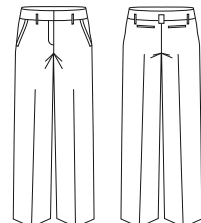
Ladies Short Sleeve Shift Dress

Style	30312
Sizes	4 – 22
Colours	Grey
Pages	29, 40



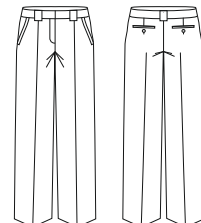
Ladies Relaxed Fit Pant

Style	10311
Sizes	4 – 26
Colours	Grey
Pages	28, 43



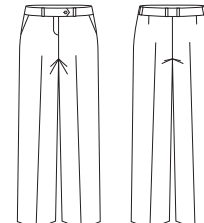
Ladies Contour Band Pant

Style	10320
Sizes	4 – 26
Colours	Grey
Pages	42



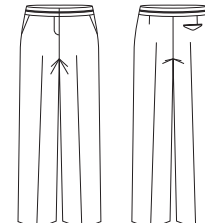
Ladies Hipster Fit Pant

Style	14012
Sizes	4 – 24
Colours	Black, Navy, Charcoal
Pages	51, 60



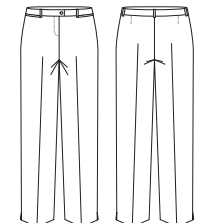
Ladies Adjustable Waist Pant

Style	14015
Sizes	4 – 30
Colours	Black, Navy, Charcoal
Pages	52



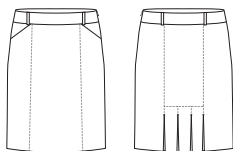
Ladies Piped Band Pant

Style	14016
Sizes	4 – 26
Colours	Black, Navy, Charcoal
Pages	50



Ladies Slim Leg Pant

Style	14017
Sizes	4 – 20
Colours	Black, Navy, Charcoal
Pages	39, 48, 58



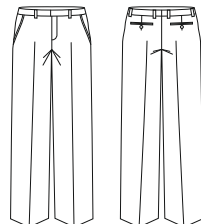
Ladies Feature Pleat Skirt

Style	20316
Sizes	4 – 26
Colours	Grey
Pages	28, 44, 45



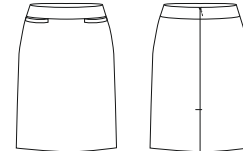
Mens Slimline Jacket

Style	80313
Sizes	92R - 127R
Colours	Grey
Pages	29, 46, 47



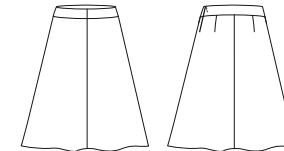
Mens Slimline Pant

Style	70313
Sizes	77R - 112R
Colours	Grey
Pages	28, 29, 46, 47



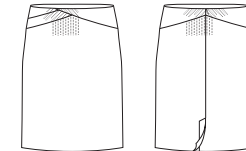
Ladies Relaxed Fit Lined Skirt

Style	24011
Sizes	4 – 26
Colours	Black, Navy, Charcoal
Pages	55



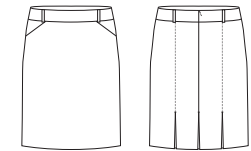
Ladies 3/4 Length Fluted Lined Skirt

Style	24013
Sizes	4 – 26
Colours	Black, Navy, Charcoal
Pages	36, 55



Ladies Chevron Band Skirt

Style	24014
Sizes	4 – 26
Colours	Black, Navy, Charcoal
Pages	54



Ladies Multi Pleat Skirt

Style	24015
Sizes	4 – 26
Colours	Black, Navy, Charcoal
Pages	38, 54, 58

## Ladies and Mens Comfort Wool Stretch



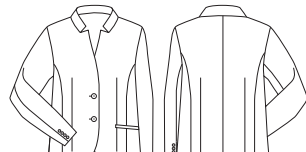
Ladies Short - Mid Length Jacket

Style	64011
Sizes	4 – 26
Colours	Black, Navy, Charcoal
Pages	55, 58



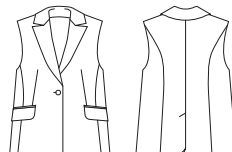
Ladies Longline Jacket

Style	64012
Sizes	4 – 26
Colours	Black, Navy, Charcoal
Pages	58



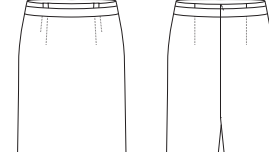
Ladies Short Jacket with Reverse Lapel

Style	64013
Sizes	4 – 26
Colours	Black, Navy, Charcoal
Pages	38, 48, 59



Ladies Longline Sleeveless Jacket

Style	64014
Sizes	4 – 26
Colours	Black, Navy, Charcoal
Pages	36, 50, 61



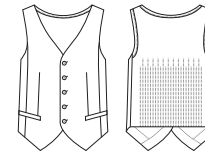
Ladies Waisted Pencil Skirt

Style	24016
Sizes	4 – 20
Colours	Black, Navy, Charcoal
Pages	53



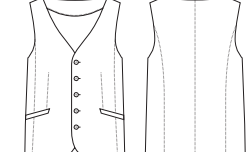
Mens 2 Button Jacket

Style	84011
Sizes	92R – 142R
Colours	Black, Navy, Charcoal
Pages	36, 38, 63



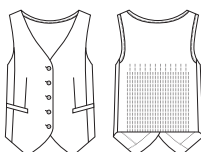
Mens Peaked Vest with Knitted Back

Style	94011
Sizes	87R – 142R
Colours	Black, Navy, Charcoal
Pages	37, 65



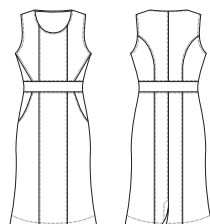
Mens Longline Vest

Style	94012
Sizes	87R – 142R
Colours	Black, Navy, Charcoal
Pages	39, 64



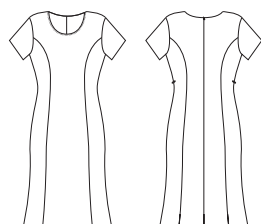
Ladies Peaked Vest with Knitted Back

Style	54011
Sizes	4 – 26
Colours	Black, Navy, Charcoal
Pages	60



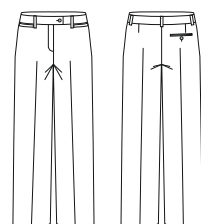
Ladies Sleeveless Side Zip Dress

Style	34011
Sizes	4 – 22
Colours	Black, Navy, Charcoal
Pages	56, 61



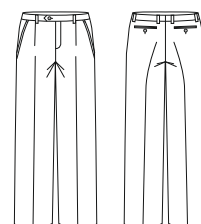
Ladies Short Sleeve Shift Dress

Style	34012
Sizes	4 – 22
Colours	Black, Navy, Charcoal
Pages	37, 57



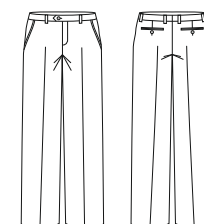
Ladies Relaxed Pant

Style	14011
Sizes	4 – 26
Colours	Black, Navy, Charcoal
Pages	36, 51, 59



Mens One Pleat Pant

Style	74011
Sizes	77R - 122R, 107S - 127S
Colours	Black, Navy, Charcoal
Pages	36, 38, 62, 63, 65



Mens Flat Front Pant

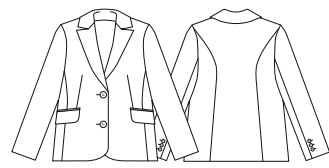
Style	74012
Sizes	77R - 122R
Colours	Black, Navy, Charcoal
Pages	39, 62, 64



# Technical Information

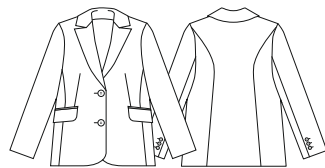
Style specifications for our range of suiting.

## Ladies and Mens Cool Stretch Plain



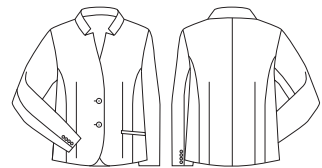
Ladies Short - Mid Length Jacket

Style	60111
Sizes	4 – 26
Colours	Black, Navy, Charcoal
Pages	30, 74, 77, 81



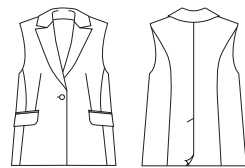
Ladies Longline Jacket

Style	60112
Sizes	4 – 26
Colours	Black, Navy, Charcoal
Pages	81



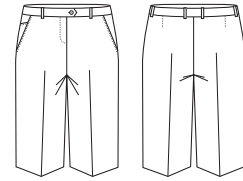
Ladies Short Jacket with Reverse Lapel

Style	60113
Sizes	4 – 26
Colours	Black, Navy, Charcoal
Pages	32, 67, 80



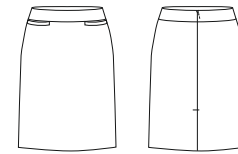
Ladies Longline Sleeveless Jacket

Style	60114
Sizes	4 – 26
Colours	Black, Navy, Charcoal
Pages	31, 69, 82



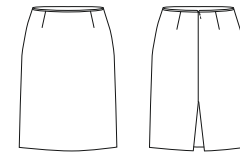
Ladies Adjustable Waist Short

Style	10119
Sizes	4 – 30
Colours	Black, Navy, Charcoal
Pages	70



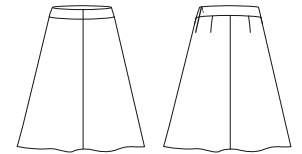
Ladies Relaxed Fit Lined Skirt

Style	20111
Sizes	4 – 26
Colours	Black, Navy, Charcoal
Pages	77



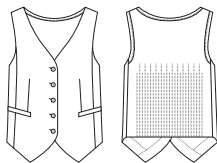
Ladies Bandless Lined Skirt

Style	20112
Sizes	4 – 26
Colours	Black, Navy, Charcoal
Pages	76



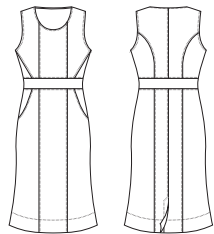
Ladies 3/4 Length Fluted Lined Skirt

Style	20113
Sizes	4 – 26
Colours	Black, Navy, Charcoal
Pages	76



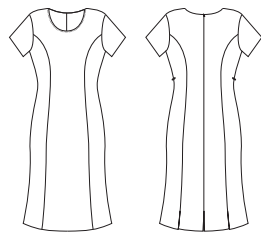
Ladies Peaked Vest with Knitted Back

Style	50111
Sizes	4 – 26
Colours	Black, Navy, Charcoal
Pages	83



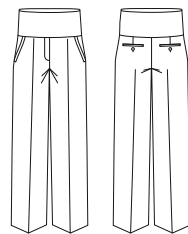
Ladies Sleeveless Side Zip Dress

Style	30111
Sizes	4 – 22
Colours	Black, Navy, Charcoal
Pages	78



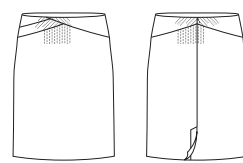
Ladies Short Sleeve Shift Dress

Style	30112
Sizes	4 – 22
Colours	Black, Navy, Charcoal
Pages	79



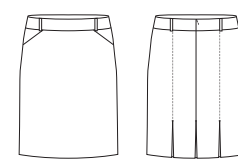
Ladies Maternity Pant

Style	10100
Sizes	S - XL
Colours	Black, Navy, Charcoal
Pages	73



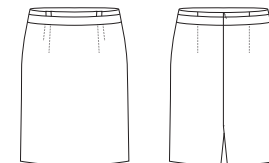
Ladies Chevron Band Skirt

Style	20114
Sizes	4 – 26
Colours	Black, Navy, Charcoal
Pages	30, 77, 81



Ladies Multi Pleat Skirt

Style	20115
Sizes	4 – 26
Colours	Black, Navy, Charcoal
Pages	75, 82



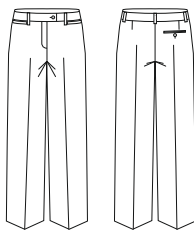
Ladies Waisted Pencil Skirt

Style	20116
Sizes	4 – 20
Colours	Black, Navy, Charcoal
Pages	32, 74



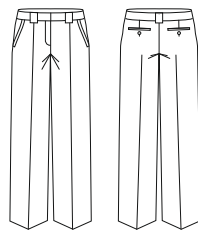
Mens 2 Button Jacket

Style	80111
Sizes	92R - 142R
Colours	Black, Navy, Charcoal
Pages	33, 88



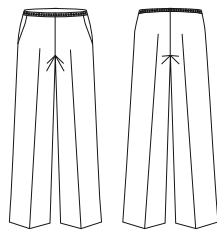
Ladies Relaxed Fit Pant

Style	10111
Sizes	4 – 26
Colours	Black, Navy, Charcoal
Pages	67, 81, 83



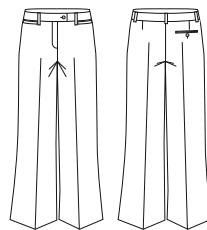
Ladies Hipster Fit Pant

Style	10112
Sizes	4 – 24
Colours	Black, Navy, Charcoal
Pages	68



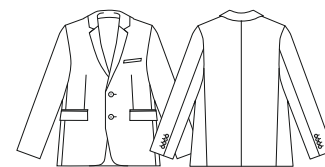
Ladies Easy Fit Waist Pant

Style	10113
Sizes	6 – 28
Colours	Black, Navy, Charcoal
Pages	73



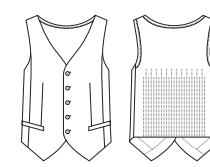
Ladies Relaxed Fit Bootleg Pant

Style	10114
Sizes	4 – 26
Colours	Black, Navy, Charcoal
Pages	72



Mens Slimline Jacket

Style	80113
Sizes	92R - 127R
Colours	Black, Charcoal only
Pages	31, 87



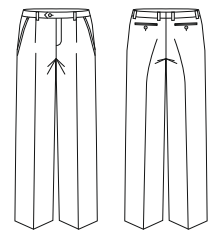
Mens Peaked Vest with Knitted Back

Style	90111
Sizes	87R - 142R
Colours	Black, Navy, Charcoal
Pages	89



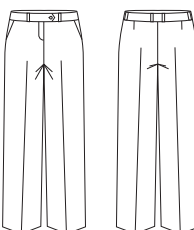
Mens Longline Vest

Style	90112
Sizes	87R – 142R
Colours	Black, Navy, Charcoal
Pages	32, 9



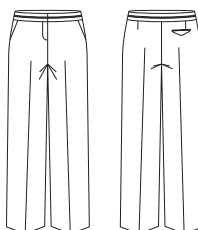
Mens One Pleat Pant

Style	70111
Sizes	77R - 112R, 107S - 127S
Colours	Black, Navy, Charcoal
Pages	33, 86, 88, 89



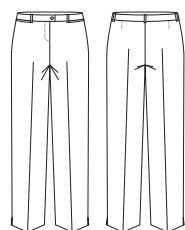
Ladies Adjustable Waist Pant

Style	10115
Sizes	4 – 30
Colours	Black, Navy, Charcoal
Pages	70



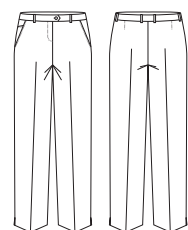
Ladies Piped Band Pant

Style	10116
Sizes	4 – 26
Colours	Black, Navy, Charcoal
Pages	32, 72



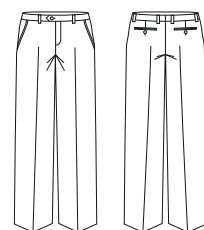
Ladies Slim Leg Pant

Style	10117
Sizes	4 – 20
Colours	Black, Navy, Charcoal
Pages	30, 69, 80



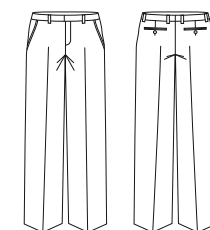
Ladies Louise Pant

Style	10118
Sizes	4 – 30
Colours	Black, Navy, Charcoal
Pages	71



Mens Flat Front Pant

Style	70112
Sizes	77R - 112R, 107S - 127S
Colours	Black, Navy, Charcoal
Pages	32, 86, 89



Mens Slimline Pant

Style	70113
Sizes	77R - 112R
Colours	Black, Charcoal only
Pages	31, 84, 87



Mens Adjustable Waist Pant

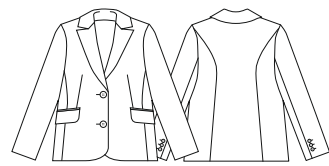
Style	70114 <b>NEW</b>
Sizes	77R - 102R, 107S - 127S
Colours	Black, Navy, Charcoal
Pages	30, 85



# Technical Information

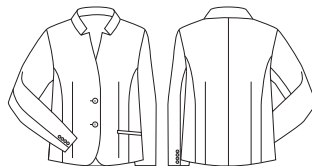
Style specifications for our range of suiting.

## Ladies and Mens Cool Stretch Pinstripe



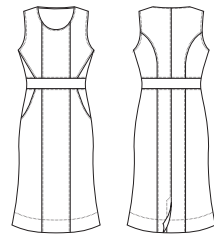
Ladies Short - Mid Length Jacket

Style	60211
Sizes	4 – 26
Colours	Black, Navy, Charcoal
Pages	26, 95



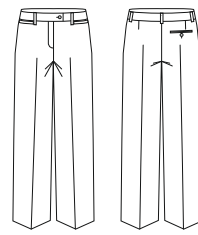
Ladies Short Jacket with Reverse Lapel

Style	60213
Sizes	4 – 26
Colours	Black, Navy, Charcoal
Pages	34, 94



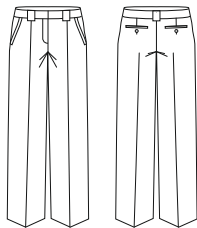
Ladies Sleeveless Side Zip Dress

Style	30211
Sizes	4 – 22
Colours	Black, Navy, Charcoal
Pages	35, 90



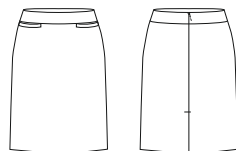
Ladies Relaxed Fit Pant

Style	10211
Sizes	4 – 26
Colours	Black, Navy, Charcoal
Pages	92, 95



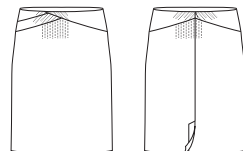
Ladies Hipster Fit Pant

Style	10212
Sizes	4 – 24
Colours	Black, Navy, Charcoal
Pages	35, 92



Ladies Relaxed Fit Lined Skirt

Style	20211
Sizes	4 – 26
Colours	Black, Navy, Charcoal
Pages	94, 95



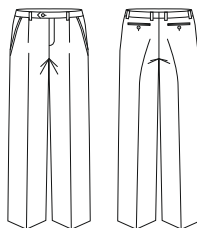
Ladies Chevron Band Skirt

Style	20214
Sizes	4 – 26
Colours	Black, Navy, Charcoal
Pages	26, 93



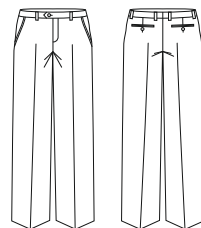
Mens 2 Button Jacket

Style	80211
Sizes	92R - 142R
Colours	Black, Navy, Charcoal
Pages	34, 96, 97



Mens One Pleat Pant

Style	70211
Sizes	77R - 122R
Colours	Black, Navy, Charcoal
Pages	34, 96, 97



Mens Flat Front Pant

Style	70212
Sizes	77R - 122R
Colours	Black, Navy, Charcoal
Pages	96





[www.bizcorporates.com](http://www.bizcorporates.com)